

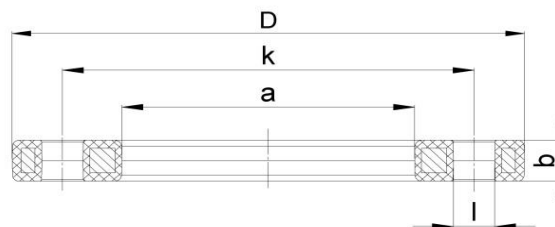
BACKING FLANGE, PP-STEEL ANSI

03 Update - 05/2022

TECHNICAL DATA

Article No	001 530 7121 0355
d (mm)	355
DN (mm)	350
Inch	14"
D (mm)	533
a (mm)	376
k (mm)	476,2
b (mm)	42
l (mm)	28,5
Weight (Kg)	24,750
Box Quantity (pcs)	1
Box Dimension (pcs)	53x53x5,5

INJECTION MOULDED



IDENTIFICATION OF PRODUCT

D	355x14"
BOLT CIRCLE	150 lbs
RAW METARIAL	PP %30 Glass-fibre Reinforced with steel ring UV-Resistant suitable for outdoor use
TRADEMARK	NTG
EXECUTION	Injection Moulded
PRESSURE CLASS	Class 150
STANDARD	ANSI ASME B16,5 Class150 ASTM D4024 BS 1560 BS EN 1759

SPECIFICATION

NUMBER OF HOLES	12
BOLT	M 27
TIGHTENING TORQUE (Nm)	120

Tolerance on diameters and thickness according to the standards. The other dimensions are specialized. Tolerance $\pm 5\%$. NTG PLASTIK reserves all the right to change any information without giving prior notice. The production, distribution and utilization of this document without explicit authorization is prohibited.